

**EN FACE VIEW OF *MANSONELLA*
(*MANSONELLA*) *AKITENSIS* (UNI, 1983)**

by scanning electron microscopy

S. UNI*

SUMMARY. The *en face* view of the head of *M. (M.) akitensis* was examined by scanning electron microscopy (SEM). The cephalic extremity with major axis dorsoventral confirmed the taxonomical position of the species.

Tête en vue apicale de *Mansonella (Mansonella) akitensis* (Uni, 1983) par microscopie à balayage

RÉSUMÉ. Pour compléter le travail sur *M. (M.) akitensis* (Uni, 1983), la tête de l'espèce en vue apicale est étudiée par microscopie à balayage.

The architecture of the cephalic extremity is an important key to differentiate the subgenera in the genus *Mansonella* (Anderson and Bain, 1976 ; Chabaud and Bain, 1976 ; Eberhard and Orihel, 1984 ; Orihel and Eberhard, 1982).

M. akitensis from the Japanese black bear was examined by SEM for its *en face* view of the head on one female adult recently collected from the perirenal adipose tissue of a black bear of the type locality, Akita, Japan. The microfilariae of this species were also found in the blood of the bear. SEM of the head revealed four pairs of submedian papillae, one pair of conspicuous amphids and a small slit-like mouth at the center (fig. 1). The amphidial pores were closely situated laterally at the center. The arrangement of the labial papillae was expanded dorsoventrally. The configuration of the cephalic extremity is shown on the basis of the scanning electron micrographs in figure 2.

However, the interlateral papillae originally described by Price (1962) in *M. interstitium* and *M. llewellyni* were not found in the specimen of *M. akitensis*.

The present finding of *en face* view of the head by SEM was in accordance with the definition of the subgenus *Mansonella*, confirming the taxonomical position of *M. akitensis* in the genus *Mansonella* (Eberhard and Orihel, 1984).

* Department of Medical Zoology, Osaka City University Medical School, Osaka 545, Japan.

Accepté le 29 janvier 1986.

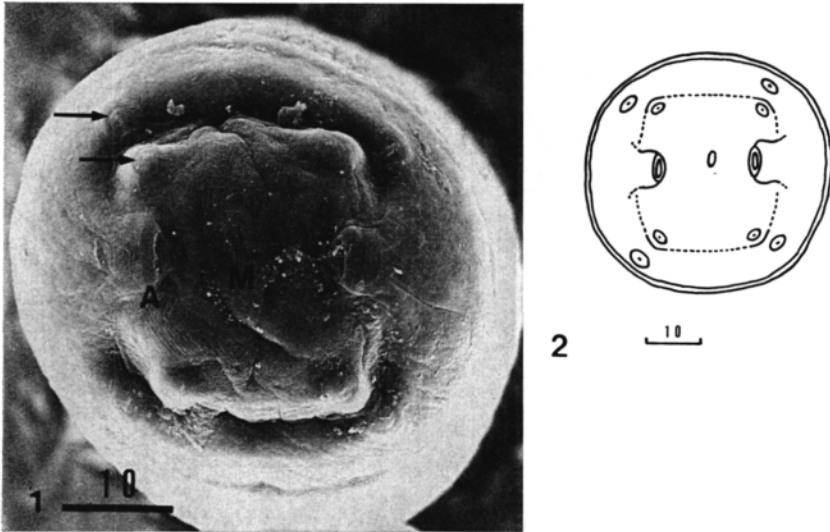


Fig. 1 and 2. — *Mansonella (Mansonella) akitensis*.

1. Cephalic extremity of female, *en face* view by SEM. Papillae (arrows), amphidial pore (A), mouth (M). The bar = 10 μm . $\times 1,500$.
2. *En face* view of head drawing on scanning electron micrographs. The bar = 10 μm .

REFERENCES

- ANDERSON R. C., BAIN O. : CIH keys to the nematode parasites of vertebrates. No. 3. Keys to genera of the order spirurida. Part 3. Diplotriaenoidea, Aprocotoidea and Filarioidea, 1976, 59-116.
- CHABAUD A. G., BAIN O. : La lignée *Dipetalonema*. Nouvel essai de classification. *Ann. Parasitol. Hum. Comp.*, 1976, 51, 365-397.
- EBERHARD M. L., ORIHÉL T. C. : The genus *Mansonella* (syn. *Tetrapetalonema*) : A new classification. *Ann. Parasitol. Hum. Comp.*, 1984, 59, 483-496.
- ORIHÉL T. C., EBERHARD M. L. : *Mansonella ozzardi* : A redescription with comments on its taxonomic relationships. *Am. J. Trop. Med. Hyg.*, 1982, 31, 1142-1147.
- PRICE D. L. : Description of *Dipetalonema interstitium* n. sp. from the grey squirrel and *Dipetalonema llewellyni* n. sp. from the raccoon. *Proc. Helm. Soc. Wash.*, 1962, 29, 77-82.
- UNI S. : Filarial parasites from the black bear of Japan. *Ann. Parasitol. Hum. Comp.*, 1983, 58, 71-84.